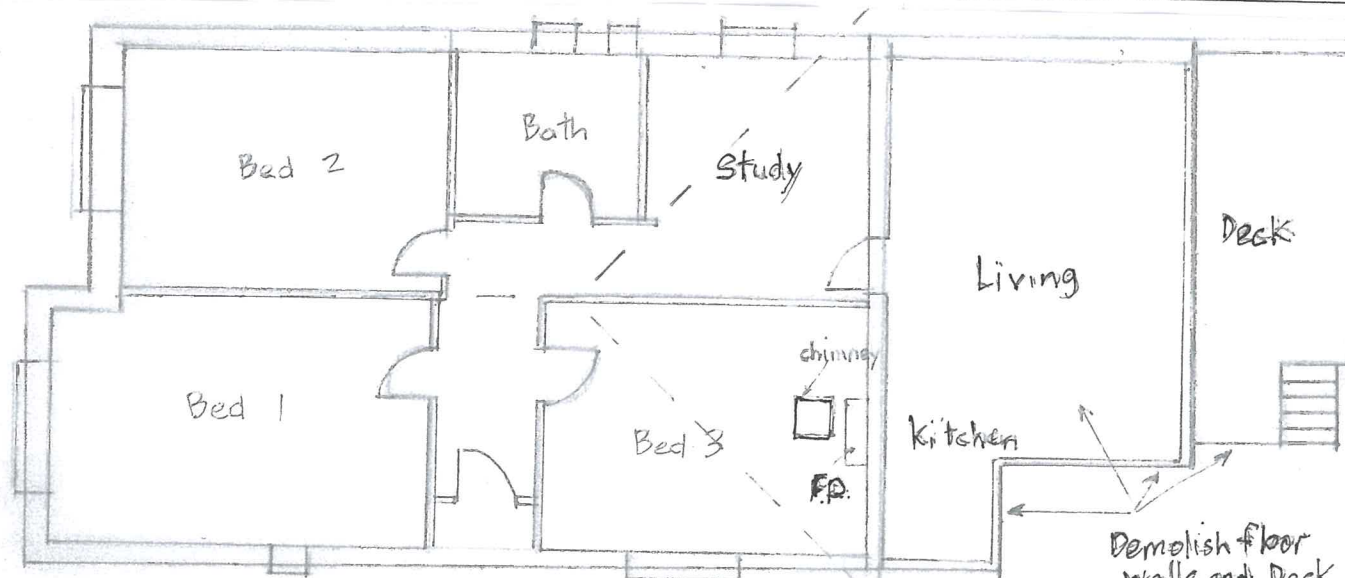


Glazing requirements						Show on DA Plans	Show on CC/CDC Plans & specs	Certifier Check
<b>Windows and glazed doors</b>								
The applicant must install the windows, glazed doors and shading devices, in accordance with the specifications listed in the table below. Relevant overshadowing specifications must be satisfied for each window and glazed door.						✓	✓	✓
The following requirements must also be satisfied in relation to each window and glazed door:								
Each window or glazed door with standard aluminium or timber frames and single clear or toned glass may either match the description, or have a U-value and a Solar Heat Gain Coefficient (SHGC) no greater than that listed in the table below. Total system U-values and SHGCs must be calculated in accordance with National Fenestration Rating Council (NFRC) conditions.							✓	✓
For projections described in millimetres, the leading edge of each eave, pergola, verandah, balcony or awning must be no more than 500 mm above the head of the window or glazed door and no more than 2400 mm above the sill.						✓	✓	✓
Pergolas with polycarbonate roof or similar translucent material must have a shading coefficient of less than 0.35.							✓	✓
Pergolas with fixed battens must have battens parallel to the window or glazed door above which they are situated, unless the pergola also shades a perpendicular window. The spacing between battens must not be more than 50 mm.							✓	✓
Overshadowing buildings or vegetation must be of the height and distance from the centre and the base of the window and glazed door, as specified in the 'overshadowing' column in the table below.						✓	✓	✓
<b>Windows and glazed doors glazing requirements</b>								
Window / door no.	Orientation	Area of glass inc. frame (m <sup>2</sup> )	Overshadowing Height (m)	Overshadowing Distance (m)	Shading device	Frame and glass type		
W1	N	4.1	2.5	3.6	eave/verandah/pergola/balcony >=450 mm	timber or uPVC, single clear, (or U-value: 5.71, SHGC: 0.66)		
W2	N	4.1	2.5	3.6	eave/verandah/pergola/balcony >=450 mm	timber or uPVC, single clear, (or U-value: 5.71, SHGC: 0.66)		
W3	N	1.3	3.9	3.6	eave/verandah/pergola/balcony >=450 mm	timber or uPVC, single clear, (or U-value: 5.71, SHGC: 0.66)		
W4	N	1.3	3.9	3.6	eave/verandah/pergola/balcony >=450 mm	timber or uPVC, single clear, (or U-value: 5.71, SHGC: 0.66)		

Construction			Show on DA Plans	Show on CC/CDC Plans & specs	Certifier Check
<b>Insulation requirements</b>					
The applicant must construct the new or altered construction (floor(s), walls, and ceilings/roofs) in accordance with the specifications listed in the table below, except that a) additional insulation is not required where the area of new construction is less than 2m <sup>2</sup> , b) insulation specified is not required for parts of altered construction where insulation already exists.			✓	✓	✓
Construction	Additional insulation required (R-value)	Other specifications			
concrete slab on ground floor.	nil				
suspended floor with enclosed subfloor: framed (R0.7).	R0.60 (down) (or R1.30 including construction)				
external wall: cavity brick	nil				
external wall: cavity brick	nil				
external wall: cavity brick	nil				
external wall: cavity brick	nil				
flat ceiling, pitched roof	ceiling: R3.00 (up), roof: foil/sarking	medium (solar absorptance 0.475 - 0.70)			



**DEMOLITION PLAN**

**BASIX** Certificate  
Building Sustainability Index [www.basix.nsw.gov.au](http://www.basix.nsw.gov.au)  
Alterations and Additions

**187 Milton Street Ashbury**

**Plan No WD06 REV A dated 17 April 2022**